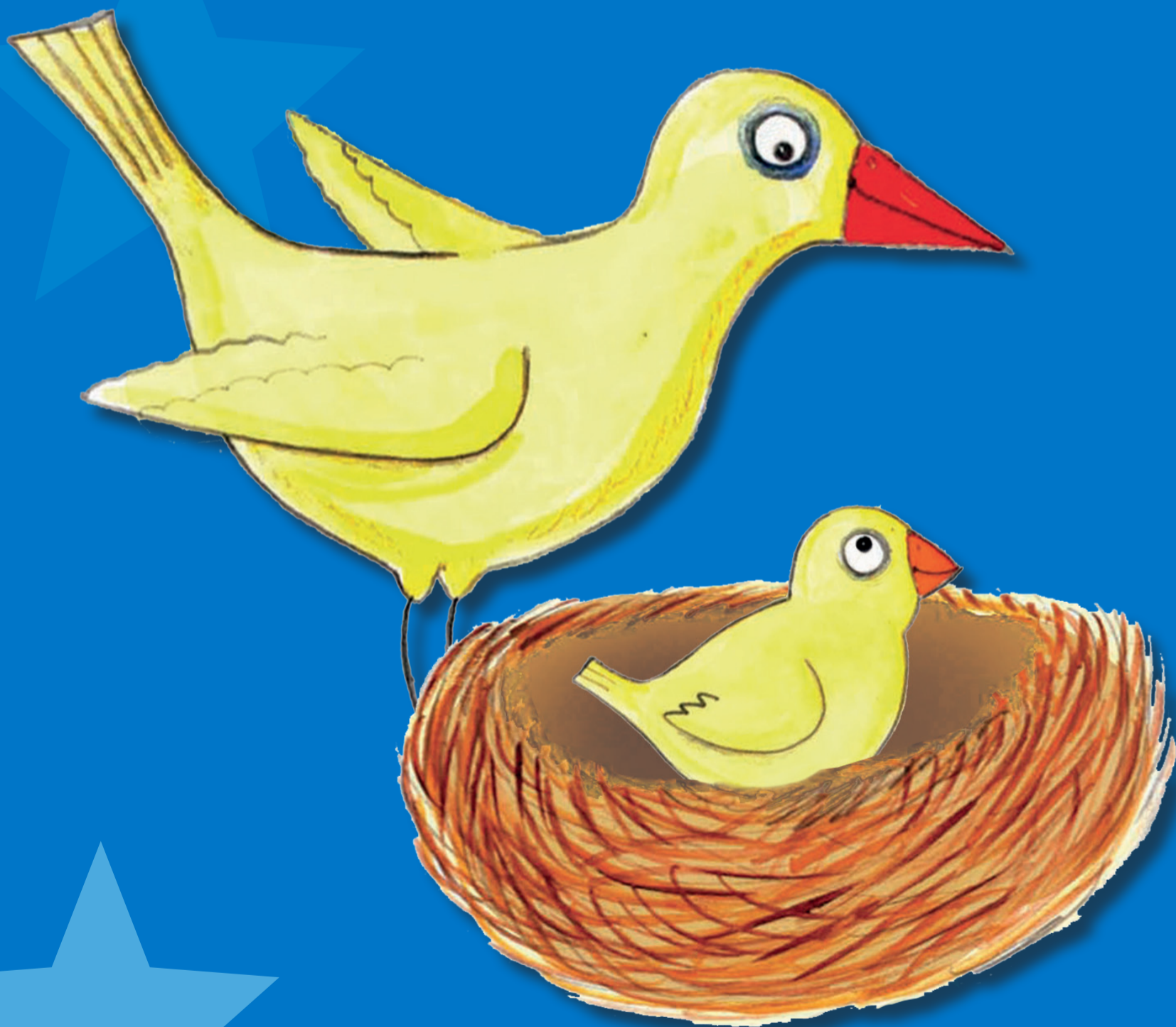


Na o Mma wa ka?

Moswantšhi: Helga Hoveka

Mongwali: Brigid Comrie

Kotara 2 – Puku Kgolo 1



Sepedi



GAUTENG PROVINCE
EDUCATION
REPUBLIC OF SOUTH AFRICA

GGT 2030
GROWING GAUTENG TOGETHER



Nonyana ya Mma e beetše
lee ka gare ga sehlaga.
E ile ya le dula godimo e le
ge e le ruthetša.





Nonyana ya Mma e ile ya
kwa e swerwe ke tlala.
E ile ya fofela ntle go yo
nyaka dijo. Lefotwana le ile
la šala le thwathwašwa go
tšwa ka leeng. Le ile la nyaka
mmago lona.





Lefotwana la botšiša:

“Kgomo, na o Mma wa ka?”

Kgomo ya re: “Aowa, efela nka go fa maswi.”

“Aowa, ke a leboga.

Ke swanetše go sepela.”



Lefotwana la botšiša la re:
“Pudi, na o Mma wa ka?”
Pudi ya re: “Aowa, efela etla
o je bjang le nna.”
“Aowa, ke a leboga.
Ke swanetše go sepela.”

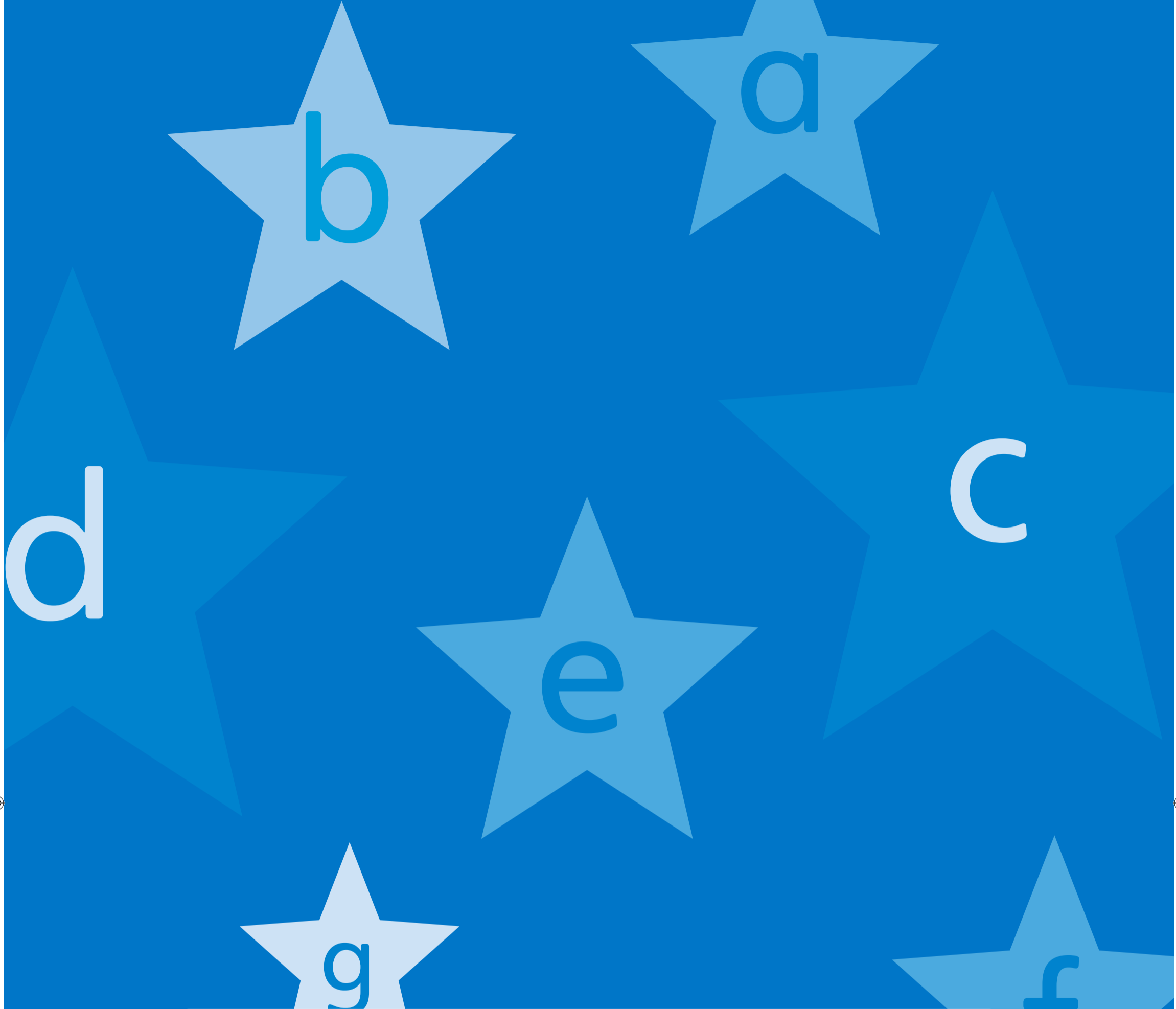


Makgolo a humana
lefotwana a le bušetša ka
gare ga sehlaga gore le
letele mmago lona.



Mmago nonyana a fofela
morago ka sehlageng a swere
seboko se se bose sa go nona.
Lefotwana le be le thabetše
go bona mmago lona.





Puku ye ye Kgolo e tšweleditšwe ke Wordworks. Ya beakanywa ke Jacqui Botha. Phetolelo go ya go Sepedi tša dirwa ke Makoma Phatudi. E rulagantšwe ke Makoma Phatudi le Juliah Maphutha.

Puku ye Kgolo e filwe laesense go ya ka Creative Common Attribution 4.0 License (<http://creativecommons.org/licenses/by/4.0/>).

